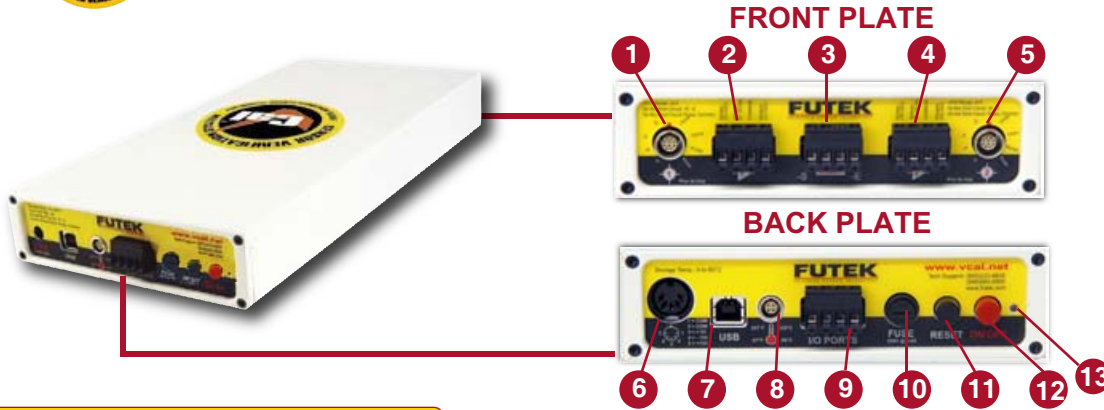




VCal™ System & Accessories



1. Ch. 1 Strain Gage Sensor Connection
2. Ch. 1 Amplified VDC or mA Sensor Connection
3. Shunt Cal Connection
4. Ch.2 Amplified VDC or mA Sensor Connection
5. Ch. 2 Strain Gage Sensor Connection
6. DC Power Supply 15VDC, 2A(MAX)
7. USB Connection
8. Temperature Input
9. I/O Connection
10. Fuse
11. RESET Switch
12. ON/OFF Switch
13. Power LED

STANDARD ACCESSORIES



OPTIONAL ACCESSORIES

--	--	--	--	--	--	--	--	--

REFERENCE SENSORS

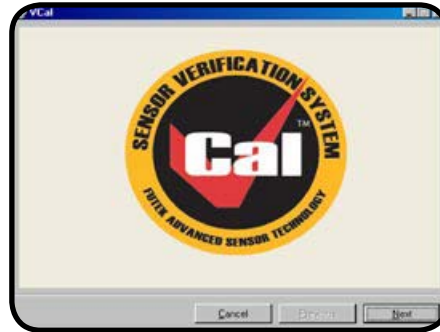




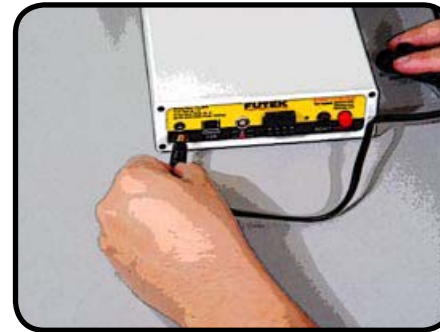
Setting Up Your VCal™ (1)



1 Insert CD.



2 Follow steps and proceed with installation.



3 Connect power supply jack.



4 Connect USB cable.



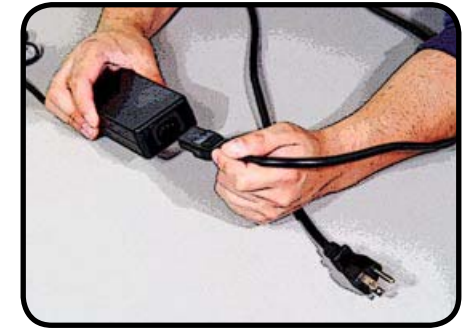
5 Connect temperature probe.



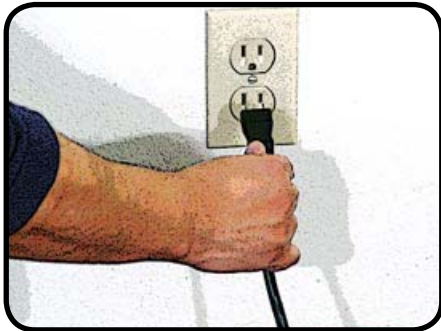
6 Connect USB cable to PC.



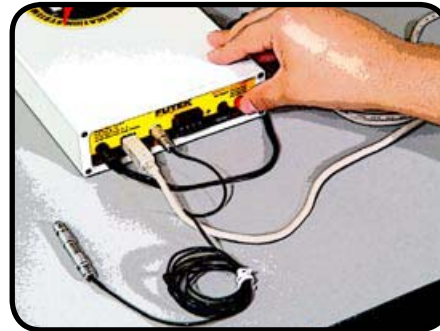
7 Ready for power connection.



8 Connect AC cable to power supply.



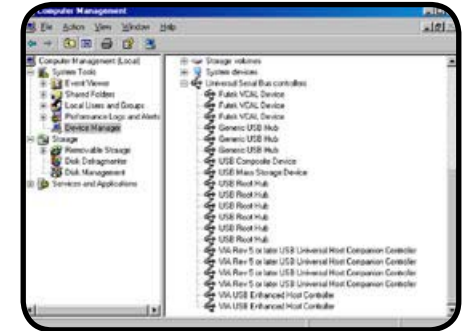
9 Connect to AC power.



10 Turn VCal power switch to ON.



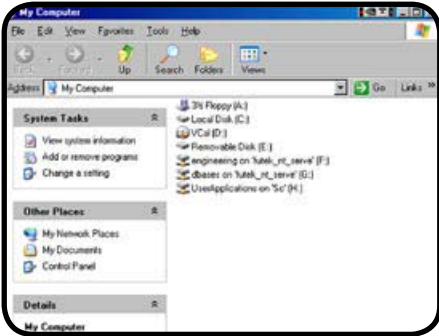
11 New Hardware Wizard will guide you with driver installation.



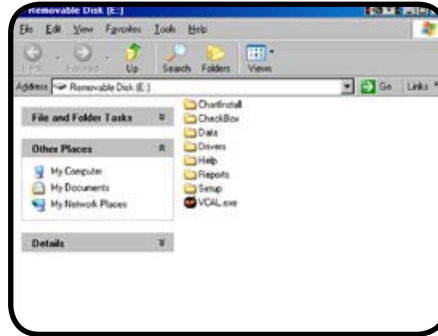
12 Device Manager will show you correctly installed drivers. If "Futek VCal Device" is not properly initialized, turn power OFF then ON.



Setting Up Your VCal™ (2)



13 Open My Computer and look for Removable Disk (:X) (Note: X could be any drive mapped).



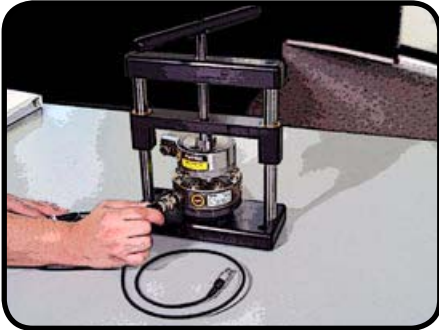
14 Locate VCAL.EXE and execute program.



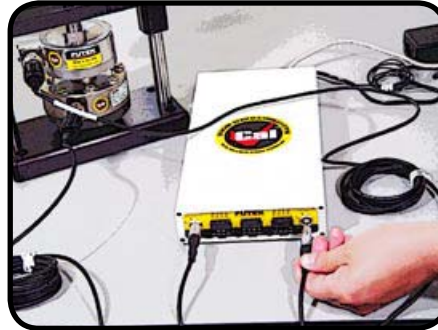
15 On the login screen choose your company name and enter "VCAL1234" default password. (Note: This password can be changed at any time).



16 Install your VCal reference sensor and sensor under test on your loading fixture.



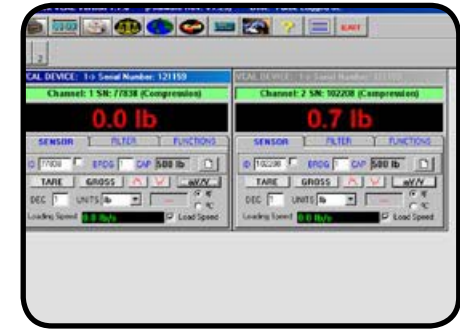
17 Connect your cable to each sensor.



18 Connect 10 pin connector to VCal.



19 Your VCal is ready to use.

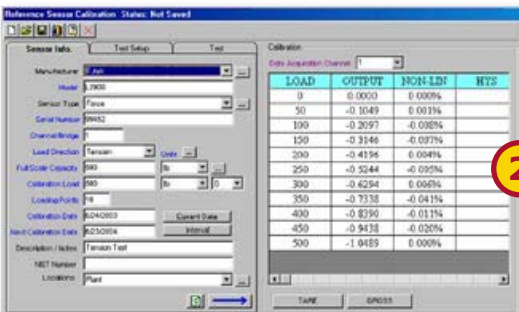


20 Please proceed to Software Diagram.

MAIN SCREEN



1. RS232 Setup (VCal Manual p. 23)



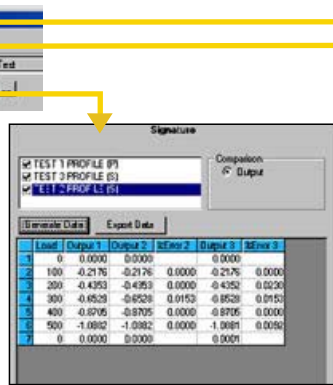
2. Reference Channel Calibration (VCal Manual p. 24)



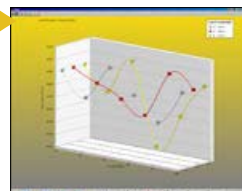
3. Test Sensor Calibration (VCal Manual p. 29)



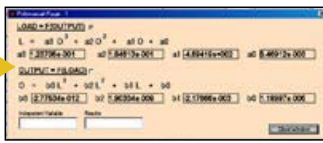
3-1. Time Test



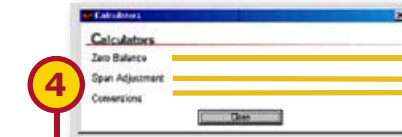
3-2. Signature Test



3-3. 3-D Graph



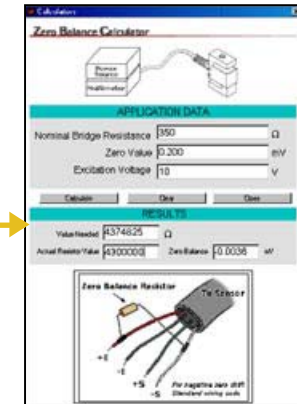
3-4. Polynomial Windows



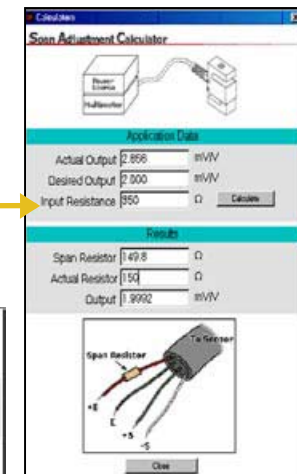
4. Calculator Tools (VCal Manual p.34)



4-1. Unit Conversion Calculator



4-2. Zero Balance Calculator



4-3. Span Adjustment Calculator



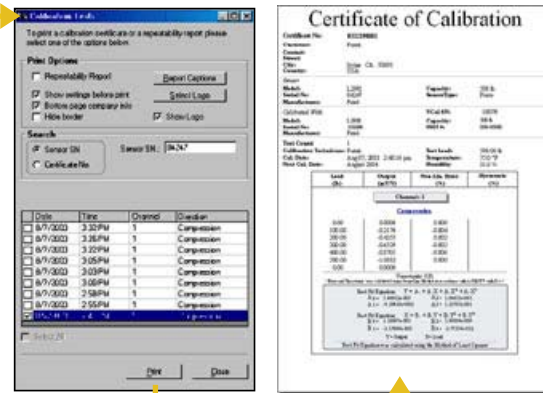
5. Management Tool (VCal Manual p. 34)



6. Filter (VCal Manual p. 21)



7. Function (VCal Manual p. 22)



3-5. Print Certificate



3-5-1. Calibration Certificate