

SensIT Test and Measurement

Version 2.1.4000.0

Installation Instructions



FUTEK
ADVANCED SENSOR TECHNOLOGY, INC.

10 Thomas, Irvine, CA 92618, USA

Toll Free: (800) 23-FUTEK

Telephone: (949) 465-0900

Fax: (949) 465-0905

futek@futek.com

www.futek.com

Table of Contents

Installation Overview.....	- 3 -
Microsoft .NET Framework 4 Installation.....	- 3 -
FTDI Driver CDM 2.08.02 Installation.....	- 6 -
SensIT Test and Measurement Version 2.1.4000.0 Installation	- 7 -
FUTEK E-Mail.....	- 11 -
FUTEK Website.....	- 12 -
Release Information.....	- 13 -
Copyright.....	- 13 -
Disclaimer	- 13 -
Contact Information	- 13 -

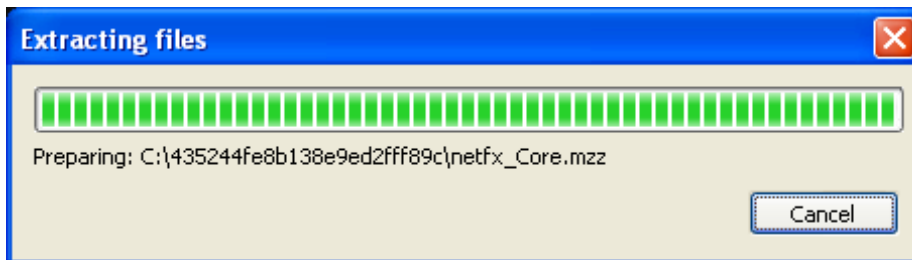
Installation Overview

This installation instruction manual outlines all of the necessary steps to install the components required to start using the SensIT Test and Measurement software. These installations will work for computers running Windows based 32-bit or 64-bit operating systems. Please Note: The installation steps should be followed in order.

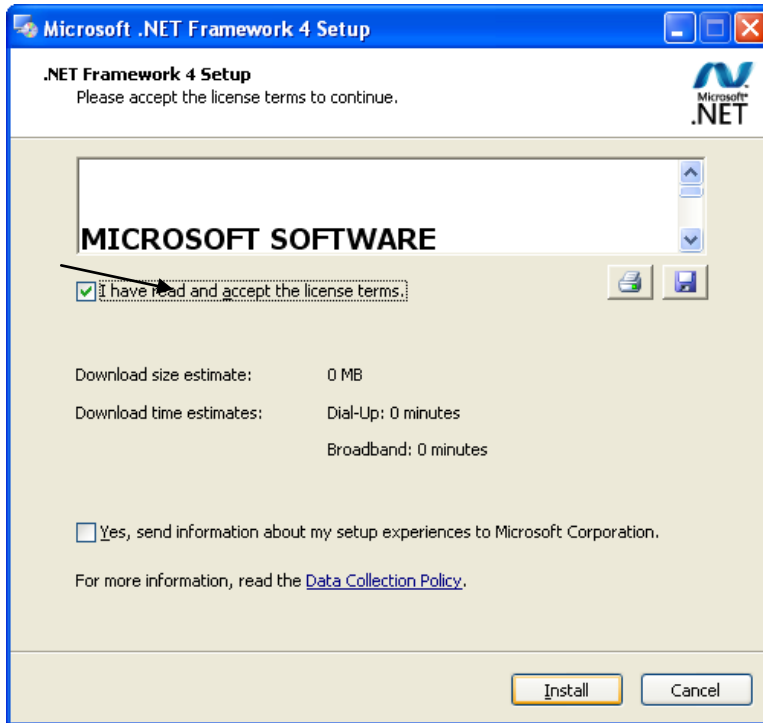
Microsoft .NET Framework 4 Installation



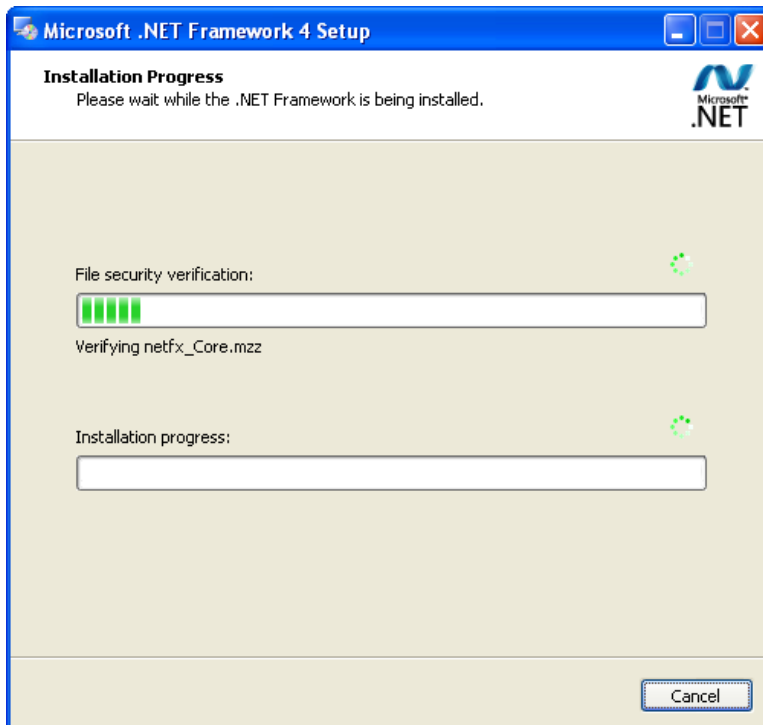
Wait a few moments for the files to extract.



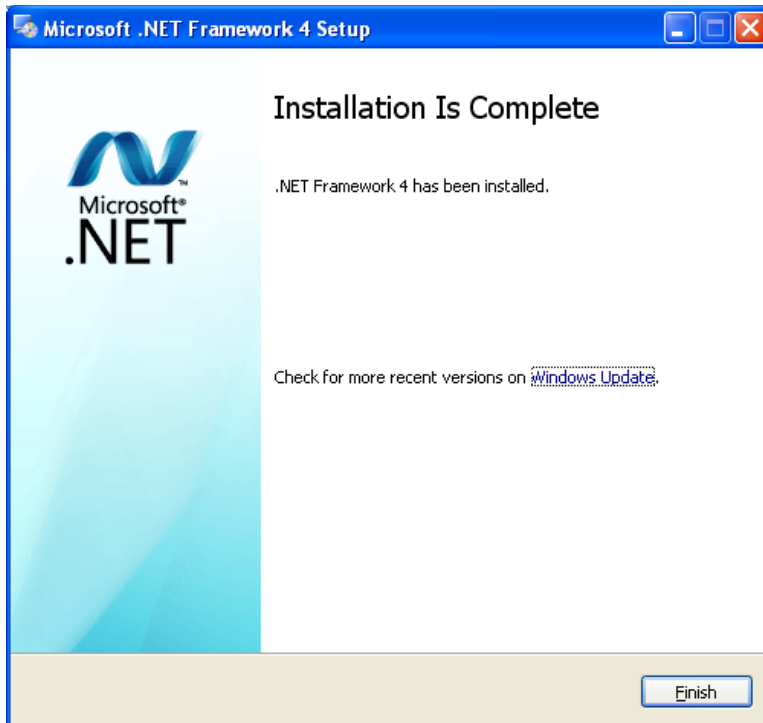
Select the check box shown below and click **Install** to begin the installation.



Wait for the **Setup** to gather the required information and copy the files. This may take several minutes.



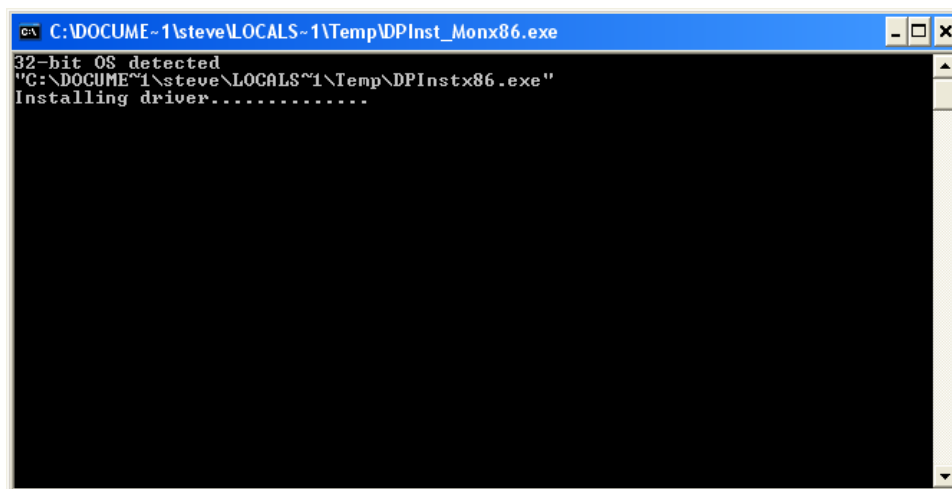
When it is finished the **Installation Is Complete** window will appear.
Click **Finish**.



FTDI Driver CDM 2.08.02 Installation



The **Driver Installation** window will appear. Wait for the installation to be completed. The window will close automatically when it is finished.



SensIT Test and Measurement Version 2.1.4000.0 Installation

FUTEK
ADVANCED SENSOR TECHNOLOGY, INC.
Sensor Software Solution

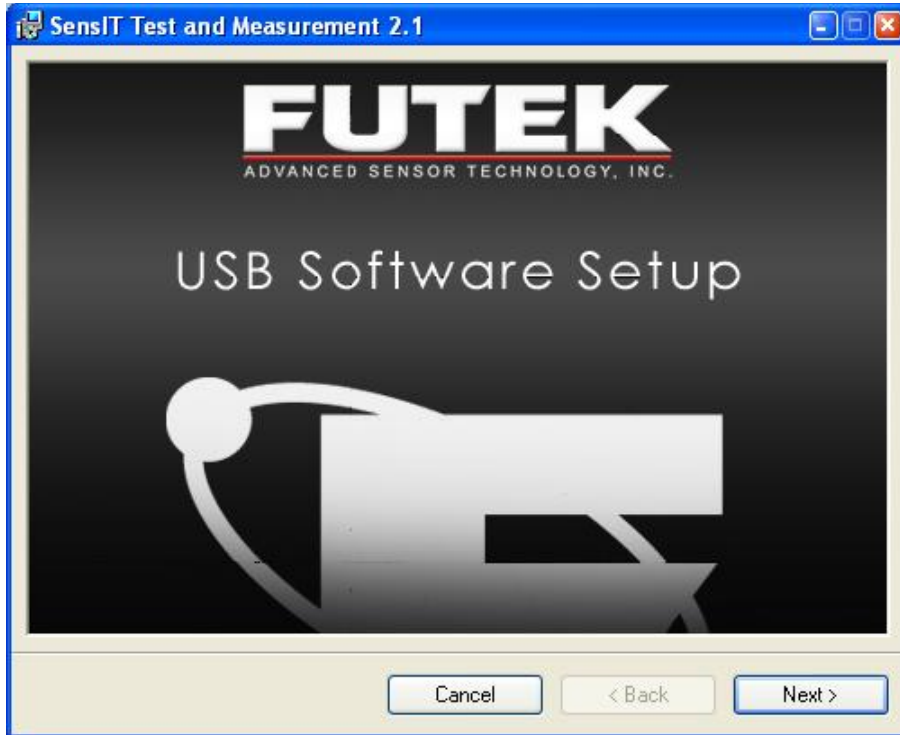
Please Install Items 1 Through 3 In Order.

1. Microsoft .NET Framework 4 Installation (x86 and x64)
2. FTDI Driver CDM 2.08.02 Installation (x86 and x64)
3. SensIT Test and Measurement Version 2.1.4000.0 Installation (x86)

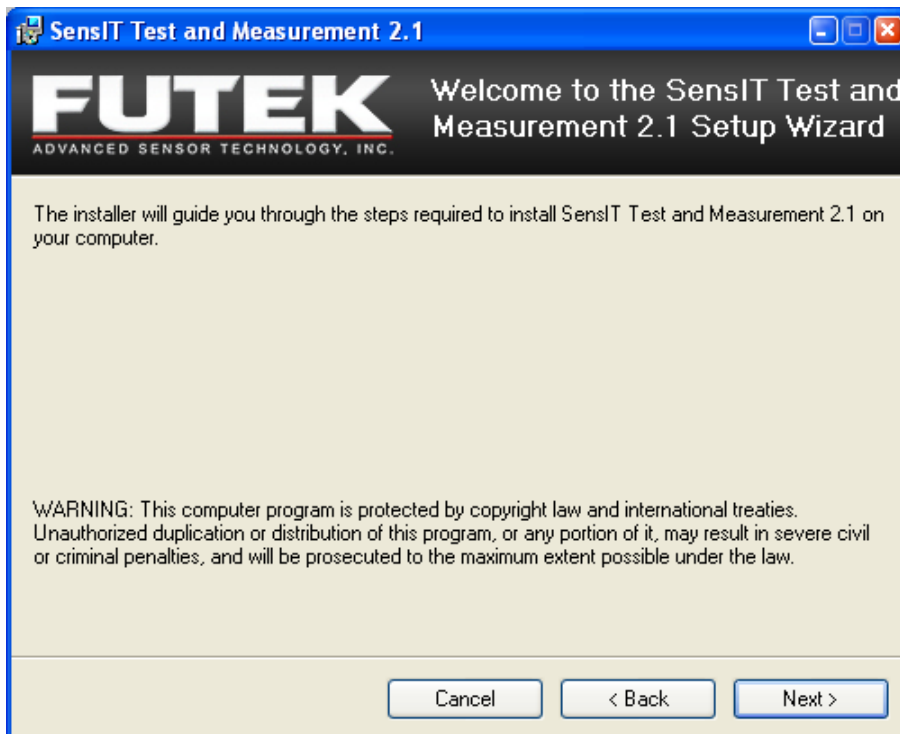
FUTEK E-Mail
FUTEK Website

FUTEK Advanced Sensor Technology, Inc. 10 Thomas, CA 92618
T 949.465.0900 F 949.465.0905 www.futek.com futek@futek.com

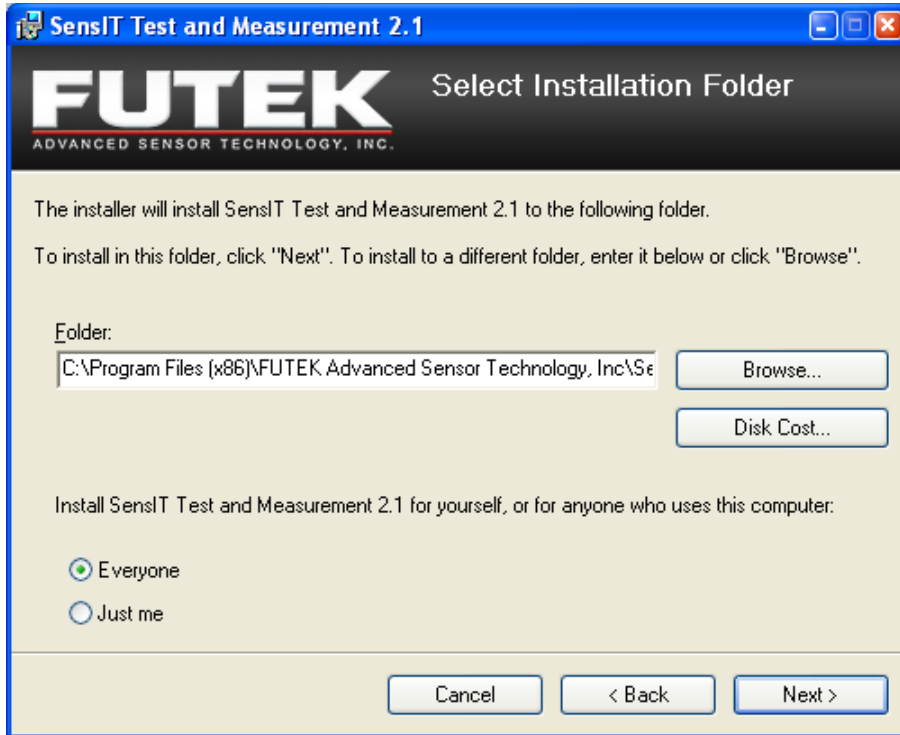
The **SensIT Test and Measurement 2.1 USB Software Setup** window will appear. Click **Next >**.



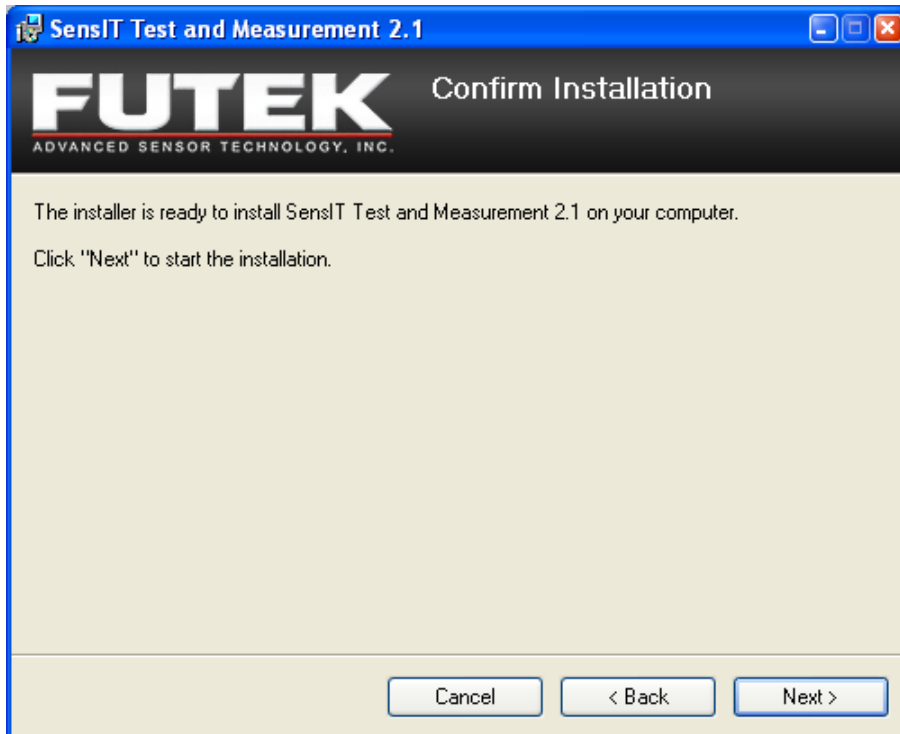
The **Welcome to the SensIT Test and Measurement 2.1 Setup Wizard** will appear. Click **Next >** to begin the installation.



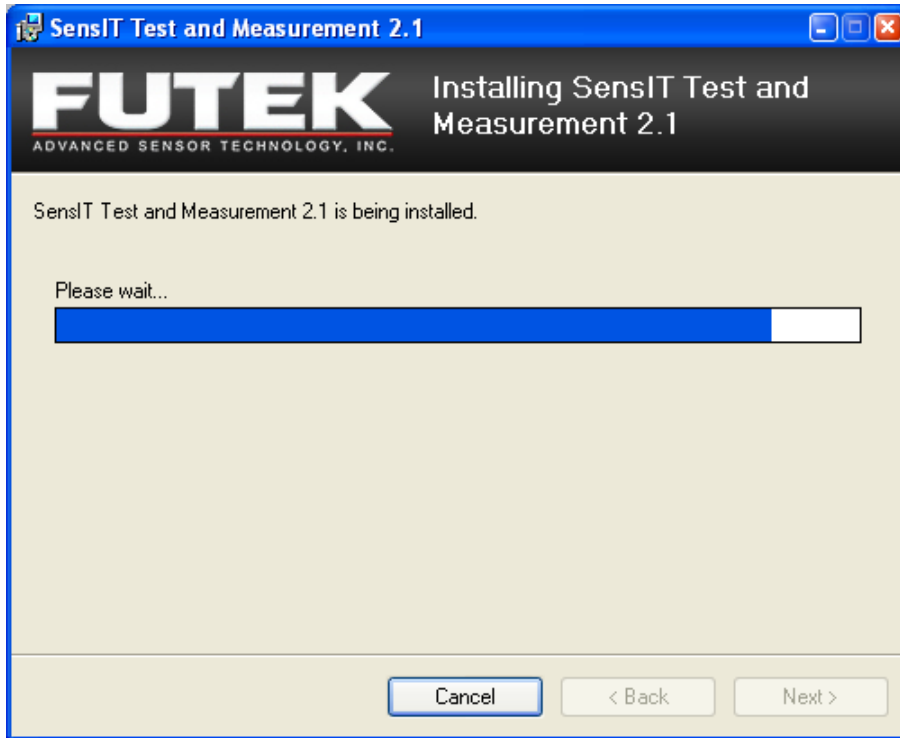
The **Select Installation Folder** window will appear.
Choose **Everyone** or **Just me** and then click **Next >** to continue.



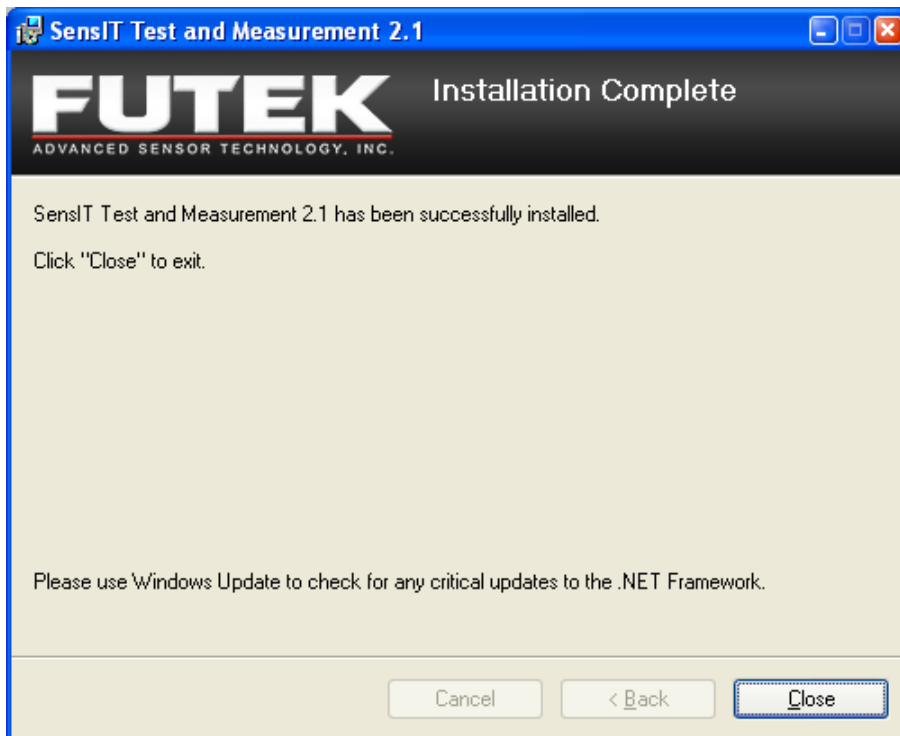
The **Confirm Installation** window will appear.
Click **Next >** to continue.



Wait while the software is being installed. This may take a few minutes.



The **Installation Complete** window will appear.
Click **Close** to exit.



FUTEK E-Mail



FUTEK
ADVANCED SENSOR TECHNOLOGY, INC.
Sensor Software Solution

Please Install Items 1 Through 3 In Order.

1. Microsoft .NET Framework 4 Installation (x86 and x64)
2. FTDI Driver CDM 2.08.02 Installation (x86 and x64)
3. SensIT Test and Measurement Version 2.1.4000.0 Installation (x86)

FUTEK E-Mail
FUTEK Website

FUTEK Advanced Sensor Technology, Inc. 10 Thomas, CA 92618
T 949.465.0900 F 949.465.0905 www.futek.com futek@futek.com

You will be redirected to a HTML document with a link on it.

Click on: E-mail: futek@futek.com

FUTEK Website



You will be redirected to the FUTEK website.

www.futek.com

Release Information

FUTEK USB Software Version 2.0.0.0 Installation Instructions – Initial Release January 2011

SensIT USB Software Version 2.0.4000.0 Installation Instructions – Initial Release July 2011

SensIT Test and Measurement Version 2.1.4000.0 Installation Instructions – Initial Release November 2011

Copyright

Copyright © FUTEK Advanced Sensor Technology, Inc. 2009-2011.

Disclaimer

Neither the whole nor any part of the information contained in, or the product described in this manual, may be adapted or reproduced in any material or electronic form without the prior written consent of the copyright holder.

This product and its documentation are supplied on an as-is basis and no warranty as to their suitability for any particular purpose is either made or implied.

This document provides preliminary information that may be subject to change without notice.

Contact Information

FUTEK Advanced Sensor Technology, Inc.

10 Thomas, Irvine, CA 92618, USA

Toll Free: (800) 23-FUTEK

Telephone: (949) 465-0900

Fax: (949) 465-0905

Email (All Inquires): futek@futek.com

Website URL: www.futek.com