

# FUTEK USB Software Version 2.0.0.0 Installation Instructions

**FUTEK**  
ADVANCED SENSOR TECHNOLOGY, INC.  
Sensor Software Solution

Please Install Items 1 Through 3 In Order.

1. Microsoft .NET Framework 4 Installation (x86 and x64)
2. FTDI Driver CDM 2.08.02 Installation (x86 and x64)
3. FUTEK USB Software Version 2.0.0.0 Installation (x86)

FUTEK E-Mail  
FUTEK Website

FUTEK Advanced Sensor Technology, Inc. 10 Thomas, CA 92618  
T 949.465.0900 F 949.465.0905 www.futek.com futek@futek.com



10 Thomas, Irvine, CA 92618, USA

Toll Free: (800) 23-FUTEK

Telephone: (949) 465-0900

Fax: (949) 465-0905

[futek@futek.com](mailto:futek@futek.com)

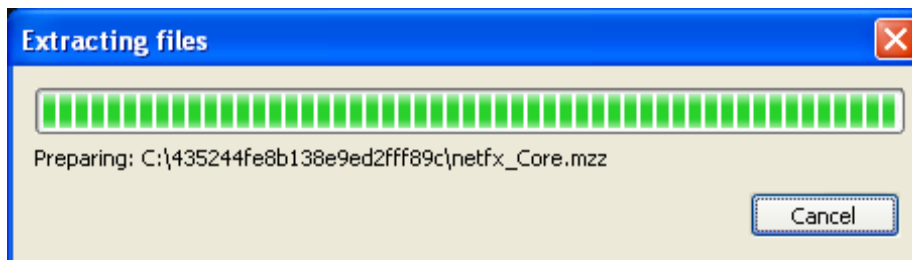
[www.futek.com](http://www.futek.com)

This installation instruction manual outlines all of the necessary steps to install the components required to start using the FUTEK USB Software. These installations will work for computers running Windows based 32-bit or 64-bit operating systems.

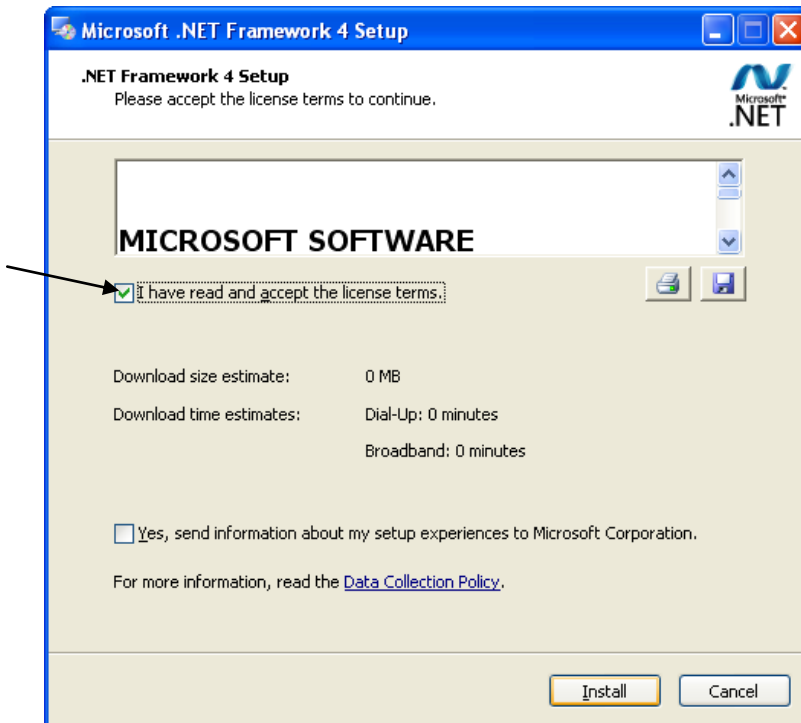
1. Click on **Microsoft .NET Framework 4 Installation**.



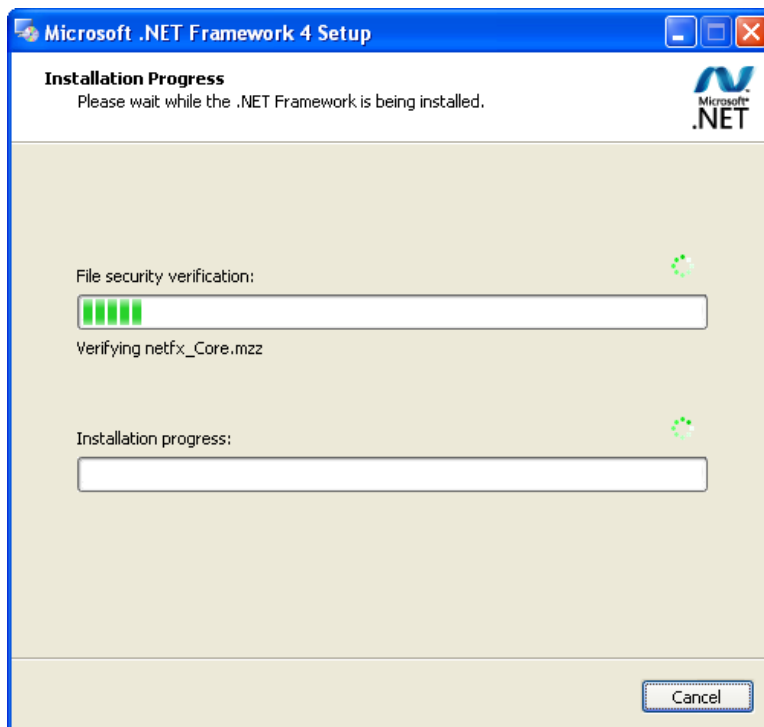
- a. Wait a few moments for the files to extract.



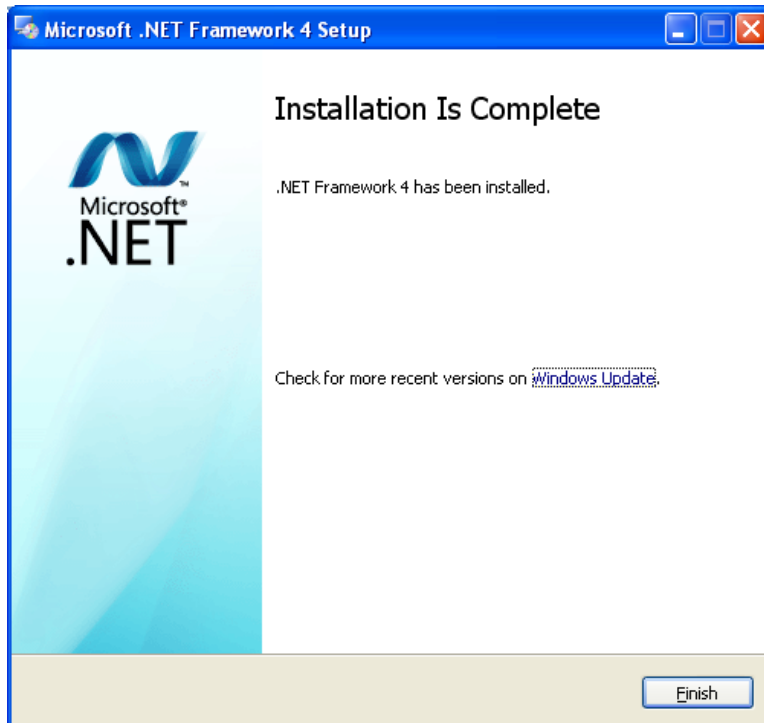
- b. Select the check box shown below and click **Install** to begin the installation.



- c. Wait for the **Setup** to gather the required information and copy the files. This may take several minutes.



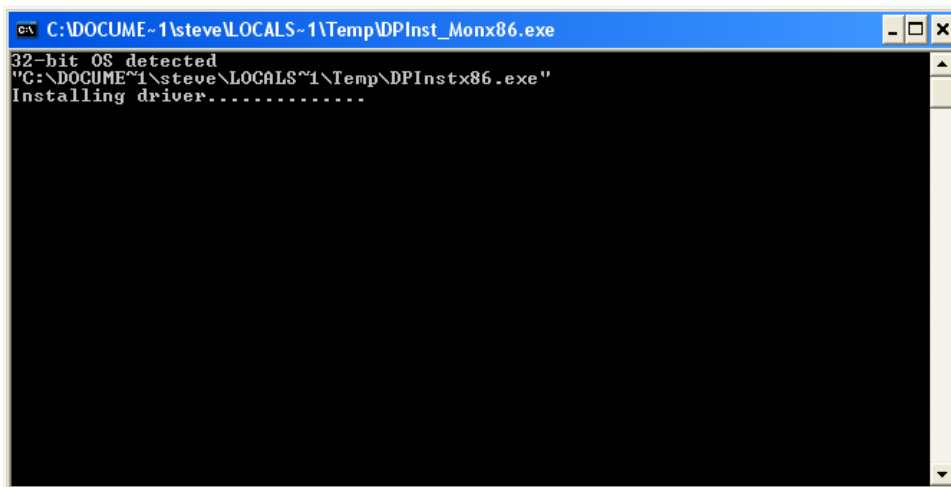
- d. When it is finished the **Installation Is Complete** window will appear. Click **Finish**.



2. Click on **FTDI Driver CDM 2.08.02 Installation**.



- a. The **Driver Installation** window will appear. Wait for the installation to be completed. The window will close automatically when it is finished.



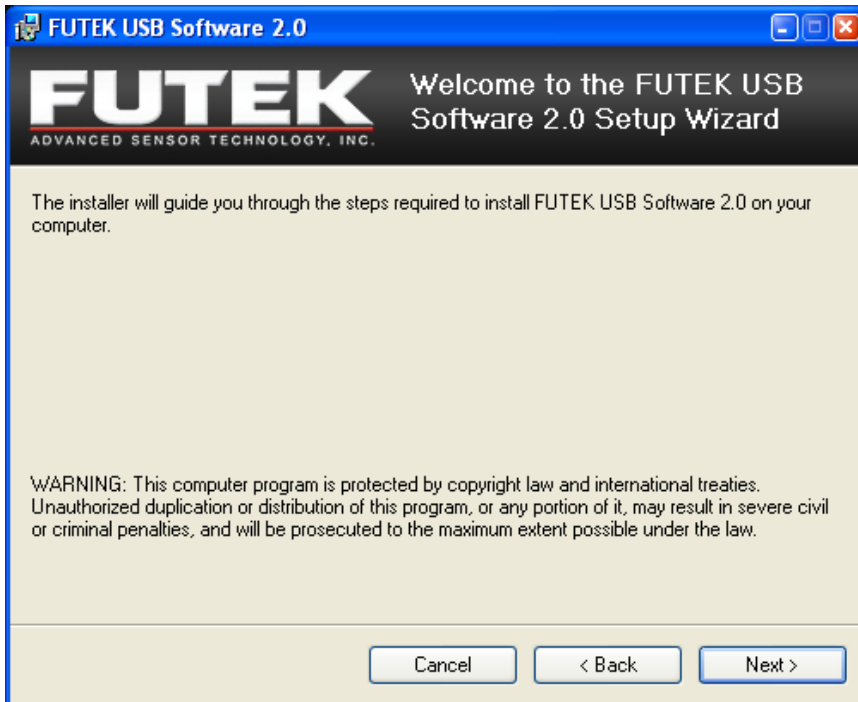
3. Click on **FUTEK USB Software Version 2.0.0.0 Installation**.



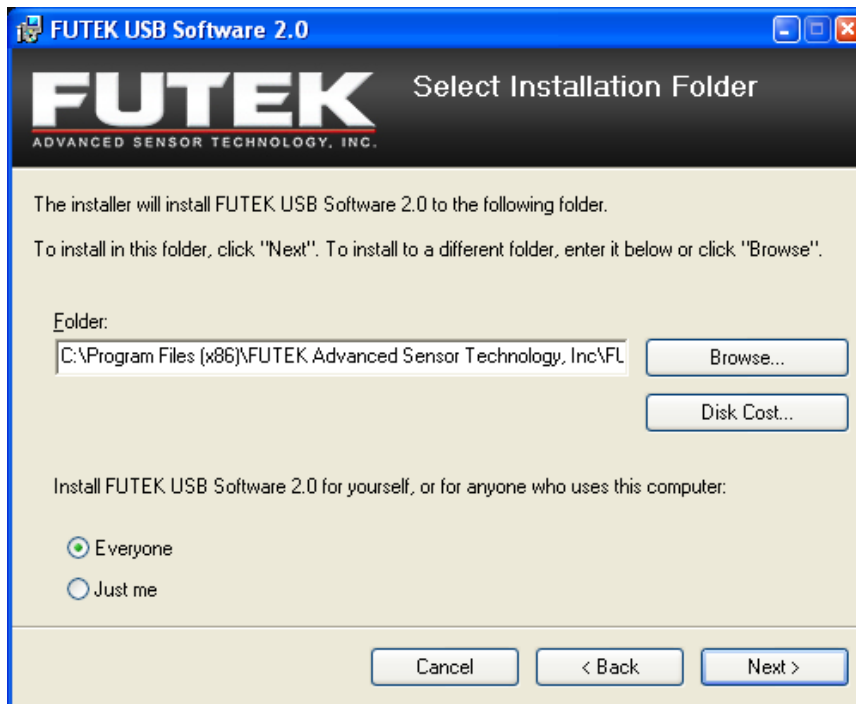
- a. The **FUTEK USB Software Setup** window will appear.  
Click **Next >**.



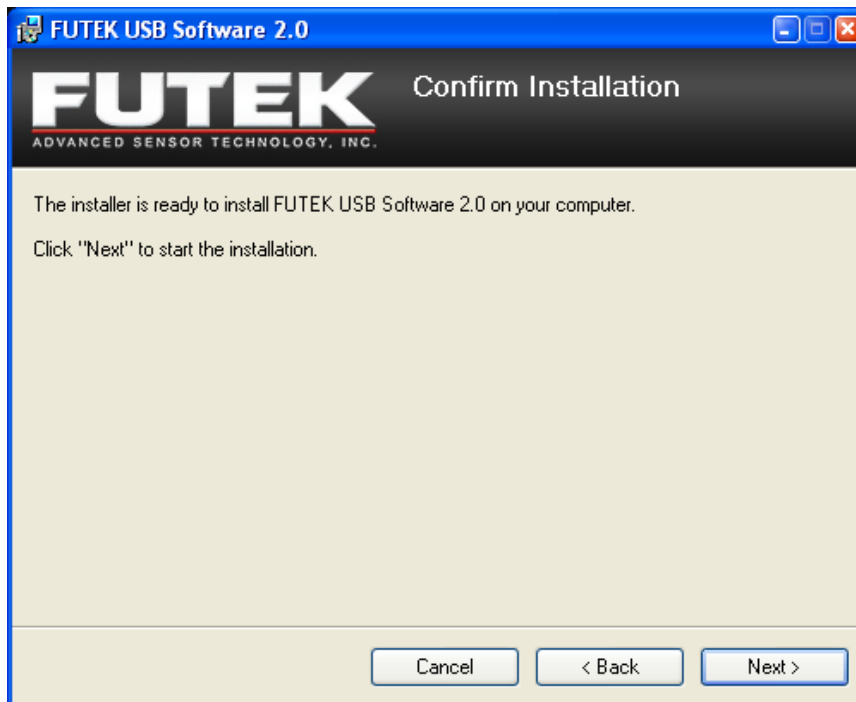
- b. The **Welcome to the Futek USB Software 2.0 Setup Wizard** will appear.  
Click **Next >** to begin the installation.



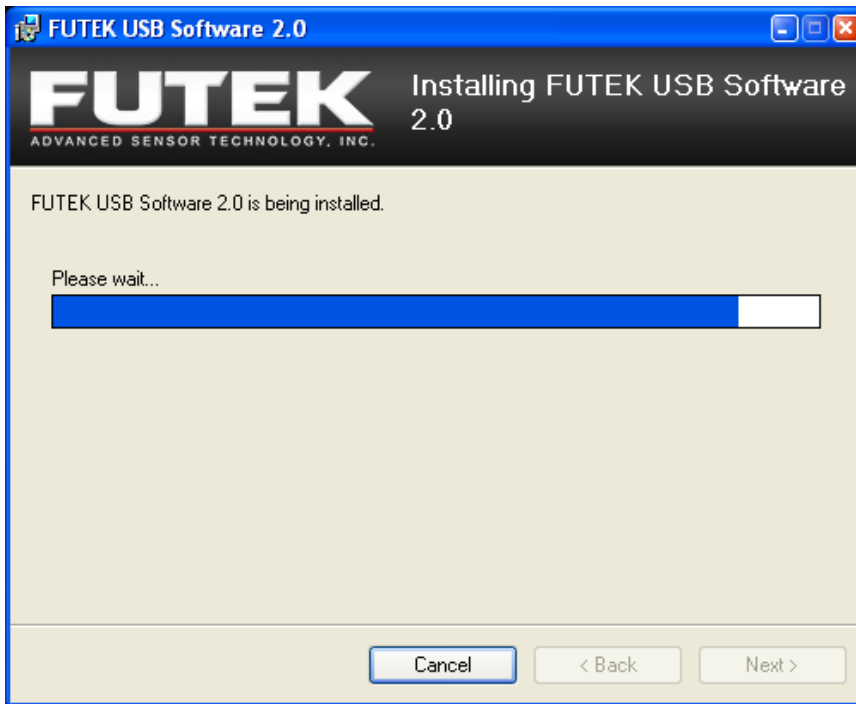
- c. The **Select Installation Folder** window will appear.  
Choose **Everyone** or **Just me** and then click **Next >** to continue.



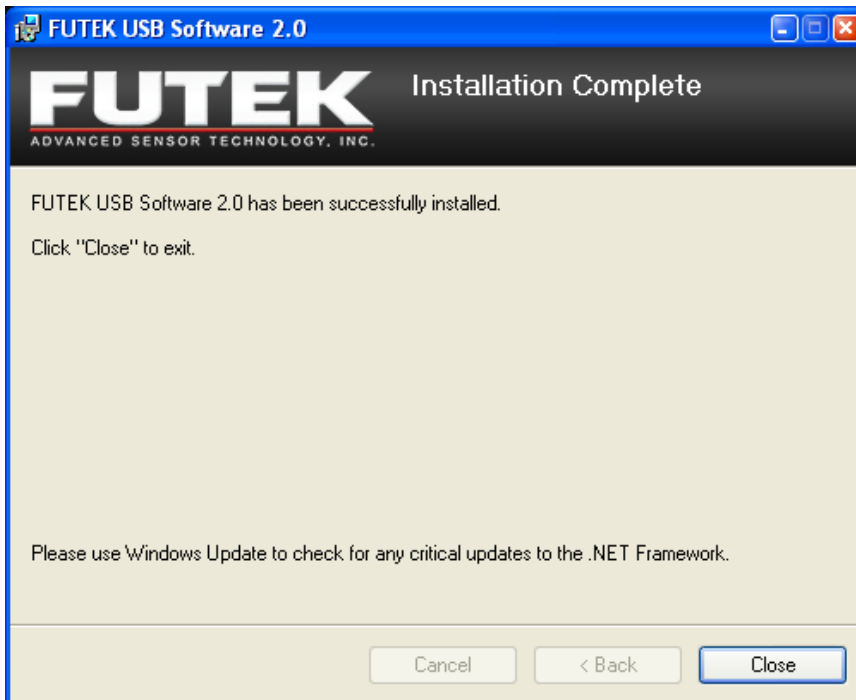
- d. The **Confirm Installation** window will appear.  
Click **Next >** to continue.



- e. Wait while the software is being installed. This may take a few minutes.



- f. The **Installation Complete** window will appear.  
Click **Close** to exit.



4. Click on **FUTEK E-Mail** if you would like to send us an E-Mail.



You will be redirected to a HTML document with a link on it. Click on:

E-mail: [futek@futek.com](mailto:futek@futek.com)

5. Click on **FUTEK Website** if you would like to visit our website.

